

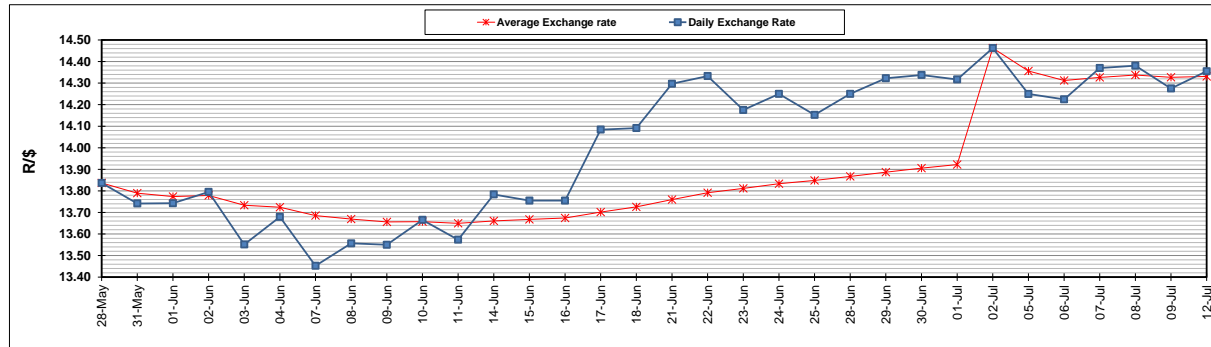
	PETROL 95 ULP	PETROL 93 ULP & LRP	DIESEL 0.05%	DIESEL 0.005%	ILL. PAR.
GAUTENG PUMP PRICE (SA c/l) AS FROM 07/07/2021	1,739.000	1,720.000	-	-	-
WHOLESALE PRICE (SA c/l) AS FROM 07/07/2021	-	-	1,508.620	1,512.020	913.488
SINGLE NATIONAL MAXIMUM RETAIL PRICE	-	-	-	-	1,150.000
BASIC FUEL PRICE - 12/07/2021 (SA c/l)	820.583	807.546	763.298	765.945	741.869
PRESS RELEASE CONTRIBUTION TO BFP 07/07/2021 - 12/07/2021 (SA c/l)	743.170	734.170	721.630	725.030	700.128
UNIT OVER/(UNDER) RECOVERY - 12/07/2021 (SA c/l)	(77.413)	(73.376)	(41.668)	(40.915)	(41.741)
AVERAGE BASIC FUEL PRICE 02/07/2021 - 12/07/2021	815.535	801.810	759.249	762.213	737.400
AVERAGE UNIT OVER/(UNDER) RECOVERY 02/07/2021 - 12/07/2021	(83.507)	(80.069)	(55.619)	(54.755)	(52.701)

ANALYSIS MOVEMENT OF AVERAGE OVER/(UNDER) RECOVERY

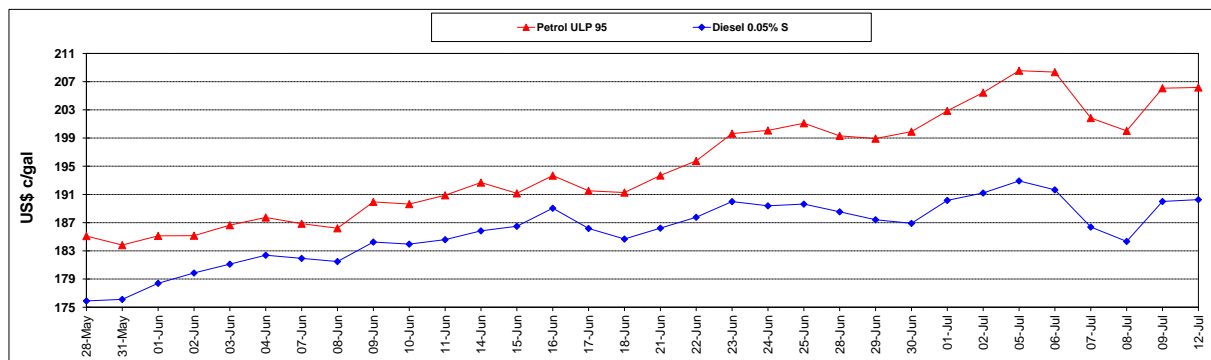
	PETROL 95	PETROL 93	DIESEL 0.05%	DIESEL 0.005%	ILL. PAR.
- MOVEMENT IN INTERNATIONAL PRODUCT PRICES	(60.227)	(57.180)	(33.945)	(32.995)	(31.651)
- MOVEMENT IN EXCHANGE RATE	(23.281)	(22.889)	(21.674)	(21.759)	(21.050)
AVERAGE UNIT OVER/(UNDER) RECOVERY 02/07/2021 - 12/07/2021	(83.507)	(80.069)	(55.619)	(54.755)	(52.701)

R/\$ EXCHANGE RATE - (R/\$14.3550- 12/07/2021)

EXCHANGE RATE USED IN BASIC FUEL PRICE



INTERNATIONAL PRODUCT PRICES OF BASKET USED IN BASIC FUEL PRICE



BASIC FUEL PRICE IN SA CENTS PER LITRE

